

# AC2010-5010 系列气源处理元件(二联件)

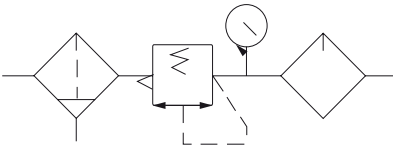
## Series Air Treatment Component (Diad pieces)

### ▲ 产品规格 Specifications

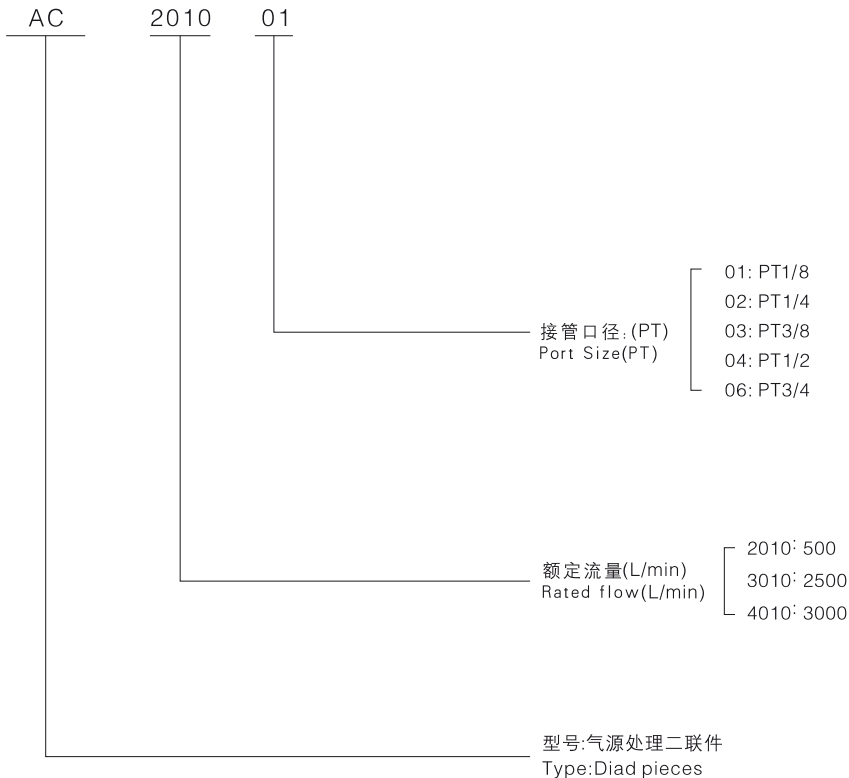
型号 Type	AC2010-01(02)	AC3010-02(03)	AC4010-04(06)
工作介质 Working fluid	空气 Air		
接管口径 Port Size	PT1/8 (PT1/4)	PT1/4 (PT3/8)	PT1/2 (PT3/4)
过滤精度 Filtration	5-25um		
调压范围 Adjustable pressure range	0.05~0.85MPa		
工作压力 working pressure	1MPa		
耐压 Proof pressure	1.5MPa		
工作温度 Working Temperature	5-60° c		
建议润滑油 Propositional lubrication	ISOVG32或同级用油 ISO VG32 or the same level lubrication		
阀型 Valve type	带溢流型 Relieving type		
额定流量 Rated flow	500L/min	1700L/min	3000L/min
压力表口径 Pressure gauge port	G1/8"		
重量 Weights	0.66kg	0.98kg	1.93kg
材质 Materials	阀体 Body	铝合金 Aluminum alloy	
	容杯 Bowl	聚碳酸酯 Polycarbonate	
构成元件 Component	防护杯罩 Bowl Guard	铁 Iron	
	过滤器 Filter	AW2000	AW3000
	调压器 Regulator	AL2000	AL3000
	油雾器 Lubrication	AL4000	AL4000



图形符号 Symbol



### ▲ 订购码 Order Code



A

GC

GFC

GFR

GF

GR

GL

AC~5000

AC~5010

AF

AR

AL

AW

AD402

QSL

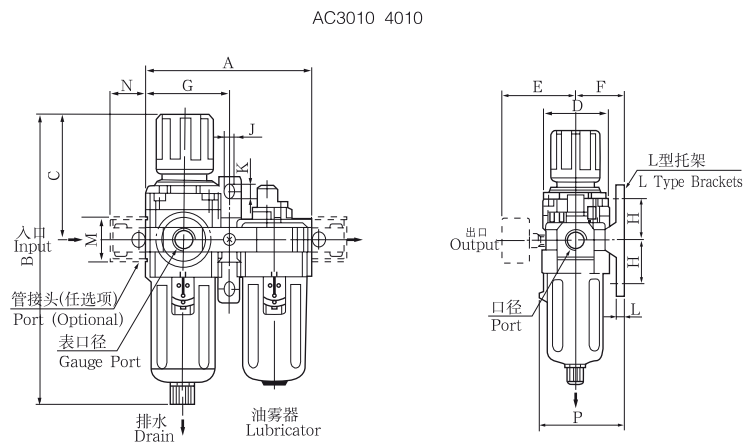
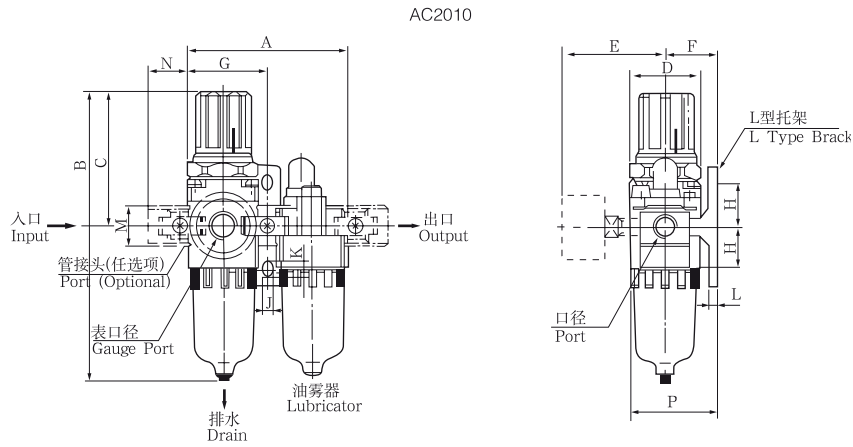
QTY

QIU

QTYH

QSL

### ▲ 外形尺寸(毫米) Overall Dimension(mm)



型号 Type	AC2010	AC3010	AC4010-04	AC4010-06
口径 Port	PT1/8-PT1/4	PT1/4-PT3/8	PT3/8-PT1/2	PT3/4
A	90	117	154	164
B	164.5	211	262.5	267
C	78	92.5	112	114
D	40	53	70	70
E	56.8	60.8	70.5	70.5
F	30	41	50	50
G	45	58.5	77	82
H	24	35	40	40
J	5.5	7	9	9
K	8.5	11	13	13
L	5	7	7	7
M	22	34.2	42.2	46.2
N	23	26	33	36
P	50	70.5	88	88