



▲ 产品规格 Specifications

缸径(mm)Bore	12	16	20	25	32	40
工作介质working Fluid	空气Air					
动作型式Action	双动Double action					
耐压Proof Pressure	1.5MPa(15.3kgf/cm ²)					
工作压力 working perssure	1.0MPa(10.2kgf/cm ²)					
最低工作压力 Min working pressure	0.12MPa(1.2kgf/cm ²)					
工作温度working temperature	0~60℃					
工作速度 working speed	50~500mm/S					
缓冲cushion	橡胶缓冲 Rubber bumper					
行程公差 stroke tolerance	+1.5 0 mm					
※润滑 cubrication	不需要no need					
轴承Bearing	滑动轴承/滚珠导向轴承 Ball Bushing Bearing					
活塞杆不转动精度 Rod non-rotating accuracy	滑动轴承 slid bearing	± 0.08°		± 0.07°		± 0.06°
	滚珠轴承Ball bushing bearing	± 0.10°		± 0.09°		± 0.08°
接管口径 Rc(PT) Port size	M5X0.8			1/8		

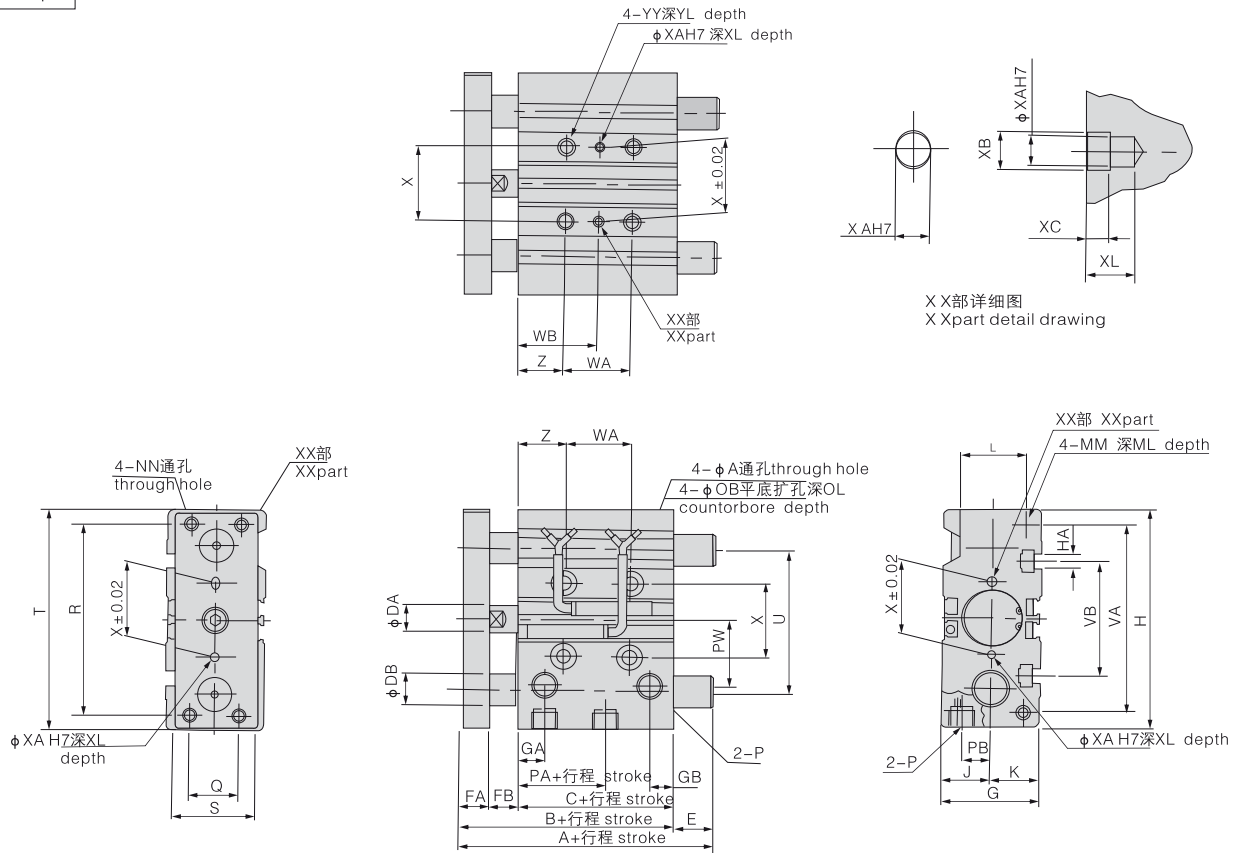
※ 如需要润滑,请用透平1号油ISOVG32
If need ,suggest NO1ISOYG32 cubrication.

▲ 型号选择 Order Code



▲ 外形尺寸(毫米) Overall Dimension(mm)

φ 12~φ 25



MGPM, MGPL 共同尺寸表 (φ 12~φ 25) common Dimension Form

缸径(mm) Bore	标准行程	B	C	DA	FA	FB	G	GA	GB	H	HA	J	K	L	MM	ML	NN	OA	OB	OL	P	PA	PB	PW	Q
12	10,20,30,40,	42	29	6	8	5	26	11	7.5	58	M4	13	13	18	M4X0.7	10	M4X0.7	4.3	8	4.5	M5X0.8	13	8	18	14
16	50,75,100	46	33	8	8	5	30	11	8	64	M4	15	15	22	M5X0.8	12	M5X0.8	4.3	8	4.5	M5X0.8	15	10	19	16
20	20,30,40,50, 75,100,125,	53	37	10	10	6	36	10.5	8.5	83	M5	18	18	24	M5X0.8	13	M5X0.8	5.6	9.5	5.5	Rc1/8	12.5	10.5	25	18
25	150,175,200	53.5	37.5	12	10	6	42	11.5	9	93	M5	21	21	30	M6X1.0	15	M6X1.0	5.6	9.5	5.5	Rc1/8	12.5	13.5	28.5	26

缸径(mm) Bore	标准行程 standard stroke	R	S	T	U	VA	VB	WA			WB			X	XA	XB	XC	XL	YY	YL	Z
								30st或以下	40st至100st	125st或以上	30st或以下	40st至100st	125st或以上								
12	10,20,30,40,	48	22	56	41	50	37	20	40	-	15	25	-	23	3	3.5	3	6	M5X0.8	10	5
16	50,75,100	54	25	62	46	56	38	24	44	-	17	27	-	24	3	3.5	3	6	M5X0.8	10	5
20	20,30,40,50, 75,100,125,	70	30	81	54	72	44	24	44	120	29	39	77	28	3	3.5	3	6	M6X1.0	12	17
25	150,175,200	78	38	91	64	82	50	24	44	120	29	39	77	34	4	4.5	3	6	M6X1.0	12	17

MGPM(滑动轴承) (Sild bearing)

缸径(mm) Bore	A		DB	E	
	50st或以下 or below	75st或以上 or above		50st或以下 or below	75st或以上 or above
12	42	60.5	8	0	18.5
16	46	64.5	10	0	18.5
20	53	84.5	12	0	31.5
25	53.5	85	16	0	31.5

MGPL(滚动导向轴承) (Ball bushing bearing)

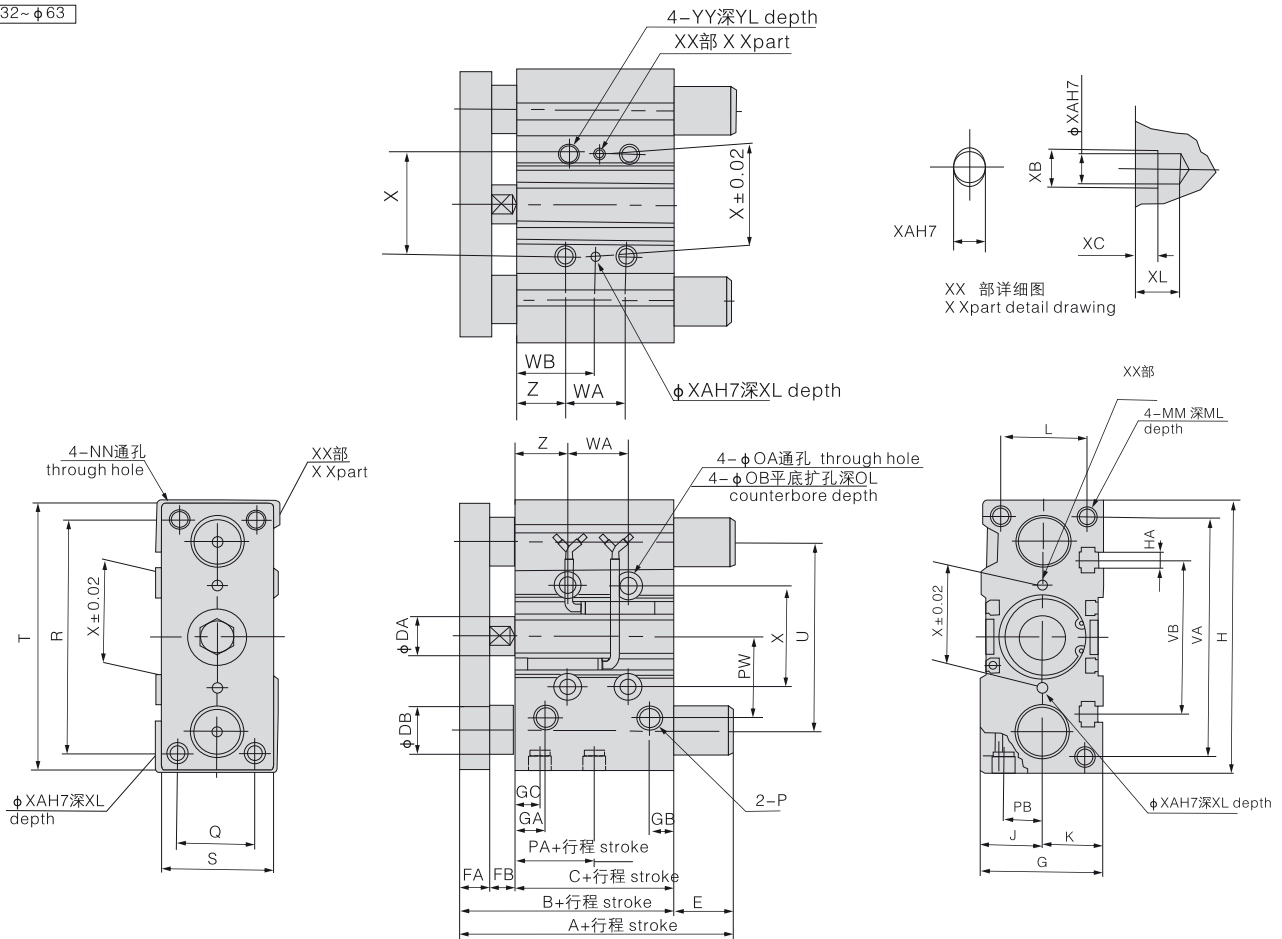
缸径(mm) Bore	A			DB	E		
	30st或以下 or below	40st至100st	125st或以上 or above		30st或以下 or below	40st至100st	30st或以下 or above
12	43	55	-	6	1	13	-
16	49	65	-	8	3	19	-
20	63	80	108	10	10	27	51
25	69.5	85.5	108.5	13	16	32	51

B

HYC
HYCD
HYCJ
HYCT
HYC
MBB
QGA(B)
CA1
CS1
DNC
SDA
SDAD
SDAJ
SDAT
SDAW
SDA
CQS
CQ2
ADVU
MAL
MSAL
MALD
MALJ
MAL
MA MAC
MSA
MAD
MAJ
MAR
MA
CJ2
CM2
DSNU
CU
TN
CXS
CXSW
MGP
CJP
CY1B(S)
MH
ZH

▲ 外形尺寸(毫米) Overall Dimension(mm)

φ32~φ63



MGPM, MGPL共同尺寸表

缸径(mm) Bore	标准行程 standard stroke	B	C	DA	FA	FB	G	GA	GB	GC	H	HA	J	K	L	MM	ML	NN	OA	OB	OL	P	PA	PB	Q
32	25, 50, 75,	59.5	37.5	16	12	10	48	12.5	9	12.5	112	M6	24	24	34	M8X1.25	20	M8X1.25	6.6	11	7.5	Rc1/8	7	15	30
40	100, 125,	66	44	16	12	10	54	14	10	14	120	M6	27	27	40	M8X1.25	20	M8X1.25	6.6	11	7.5	Rc1/8	13	18	30
50	150, 175, 200	72	44	20	16	12	64	14	11	12	148	M8	32	32	46	M10X1.5	22	M10X1.5	8.6	14	9	Rc1/4	9	21.5	40
63		77	49	20	16	12	78	16.5	13.5	16.5	162	M10	39	39	58	M10X1.5	22	M10X1.5	8.6	14	9	Rc1/4	14	28	50

缸径(mm) Bore	标准行程 standard stroke	R	S	T	U	VA	VB	WA			WB			X	XA	XB	XC	XL	YY	YL	Z
								25st	50, 70, 100st	100st以上	25st	50, 70, 100st	100st以上								
32		96	44	110	78	98	63	24	48	124	33	45	83	42	4	4.5	3	6	M8X1.25	16	21
40	25, 50, 75,	104	44	118	86	106	72	24	48	124	34	46	84	50	4	4.5	3	6	M8X1.25	16	22
60	100, 125, 150,	130	60	146	110	130	92	24	48	124	36	48	86	66	5	6	4	8	M10X1.5	20	24
63	175, 200	130	70	158	124	142	110	28	52	128	38	50	88	80	5	6	4	8	M10X1.5	20	24

MGPM(滑动轴承) (Sild bearing)

缸径(mm) Bore	A		DB	E	
	25.5st	50st以上		25, 50st	50st以上
32	97	102	20	37.5	42.5
40	97	102	20	31	36
50	106.5	118	25	34.5	46
63	106.5	118	25	29.5	41

MGPL(滚动导向轴承) (Ball bushing bearing)

缸径(mm) Bore	A			DB	E		
	25, 50st	75st, 100st	100st以上		25, 50st	75, 100st	100st以上
32	81	98	118	16	21.5	38.5	58.5
40	81	98	118	16	15	32	52
50	93	114	134	20	21	42	62
63	93	114	134	20	16	37	57